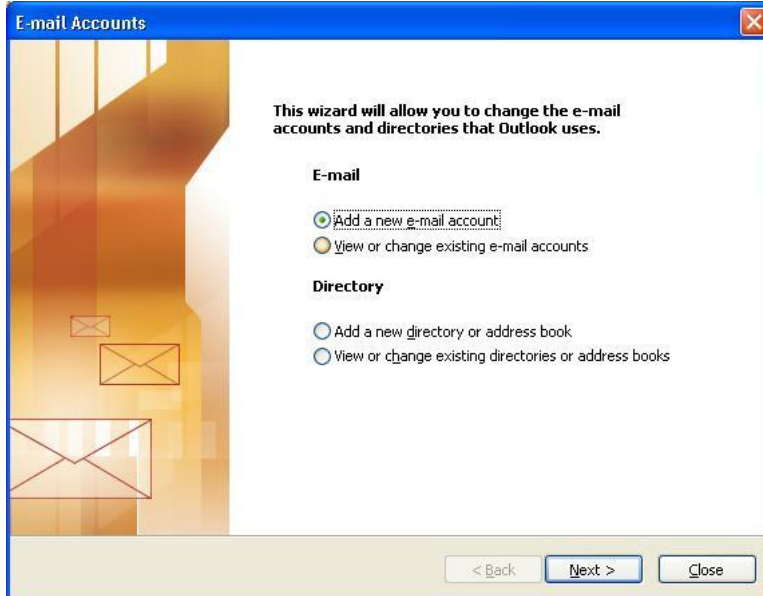


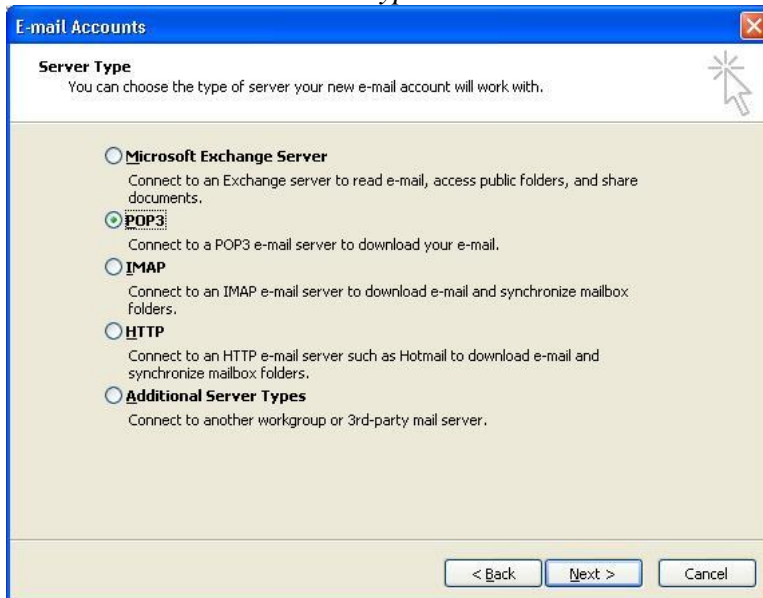
Open up *Microsoft Outlook 2003* or *2007*.

On the menu bar across the top of the window, select *Tools* and then click on *Email Accounts* or *Accounts*.

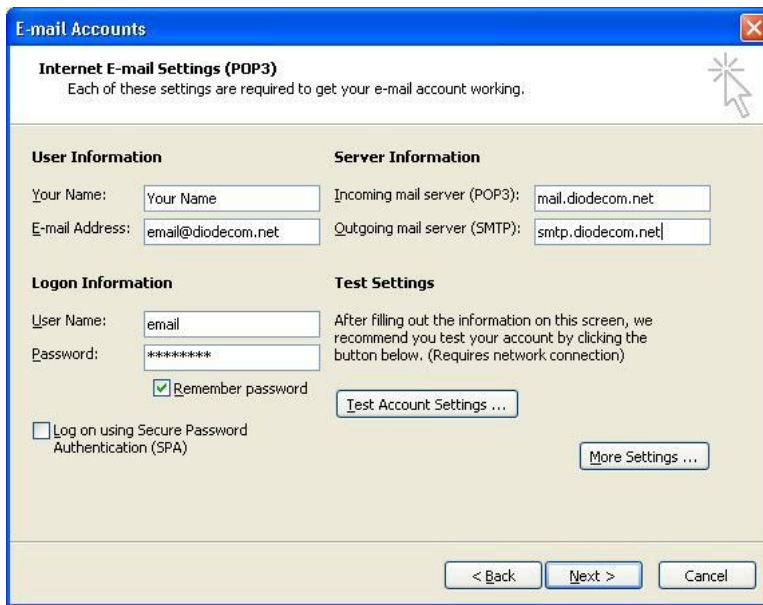
Under E-mail choose the *Add A New E-mail Account* and then click *Next*.



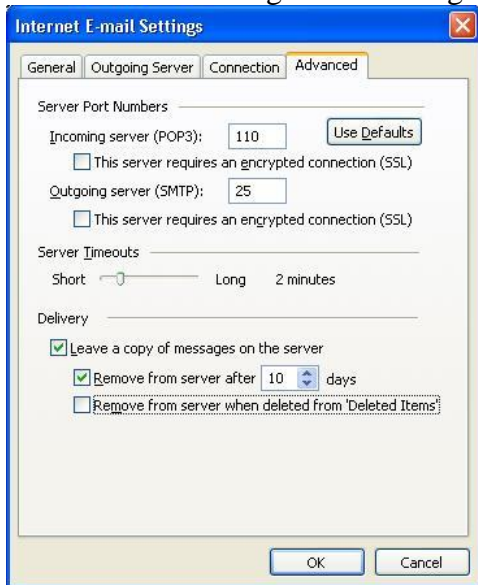
Select *POP3* for the *Server Type* and then click *Next*.



Then fill out *Your Name*, *E-mail Address*, *User Name*, and *Password*. For *Incoming Mail Server* put *mail.diodecom.net* and for the *Outgoing Mail Server* put *smtp.diodecom.net* (If you have WildBlue for your Internet, please see the end of the article on some additional settings for your outgoing mail to properly work). Then click on the *More Settings* button.

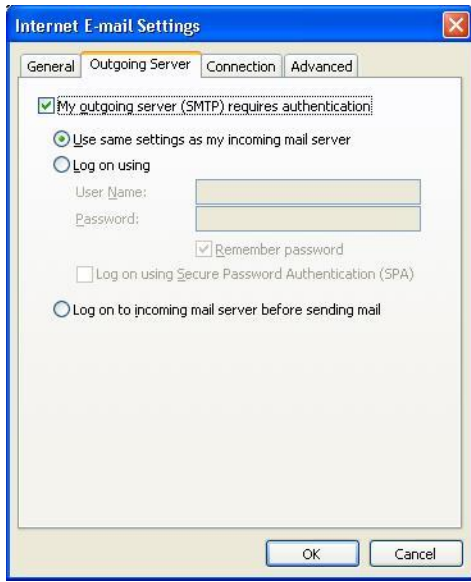


On the *Internet E-mail Settings* window click on the *Advanced* tab and then click the boxes for both *Leave A Copy Of Messages On The Server* and *Remove From Server After 10 Days* (If you have WildBlue, skip the rest of this and jump to the next step, otherwise continue reading). Then press *OK*. Then press *Next*. Then click *Finish* to return to your inbox to start sending and receiving messages.



For WildBlue Users Only

With the *Internet E-mail Settings* window still open, click on the *Outgoing Servers* tab, then check the box that says *My Outgoing Server(SMTP) Requires Authentication*, then make sure the circle is selected that says *Use Same Settings As My Incoming Mail Server*. Then press the *OK* button.



When back on the *E-mail Accounts* window, change the *Outgoing Mail Server* to `smtp2.diodecom.net`, then press the *OK* button. Then press *Next*. Then click *Finish* to return to your inbox to start sending and receiving messages. *After your WildBlue is installed, you may need to wait up to 5 days for your email to start working properly.

