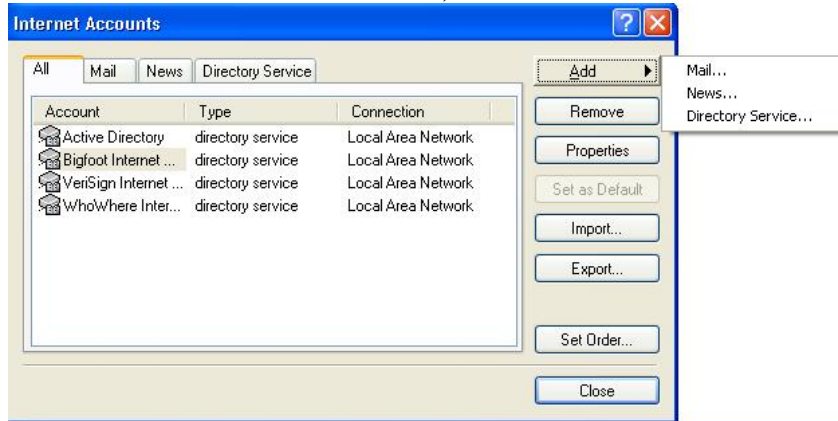


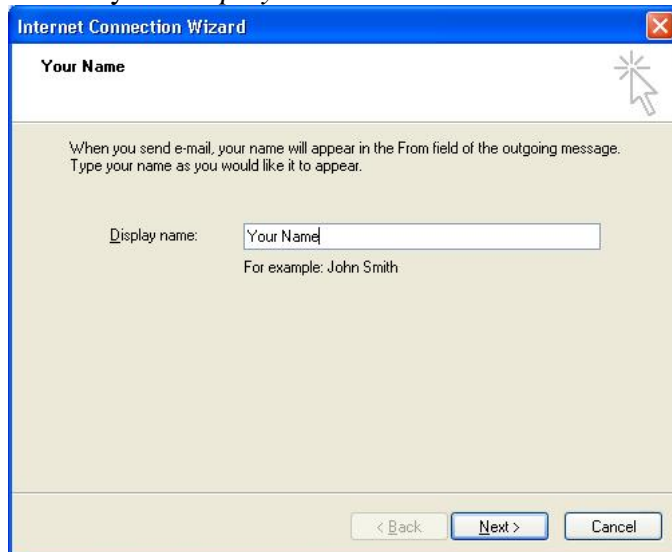
Open up *Microsoft Outlook Express*.

On the menu bar across the top of the window select *Tools* and then click on *Accounts*.

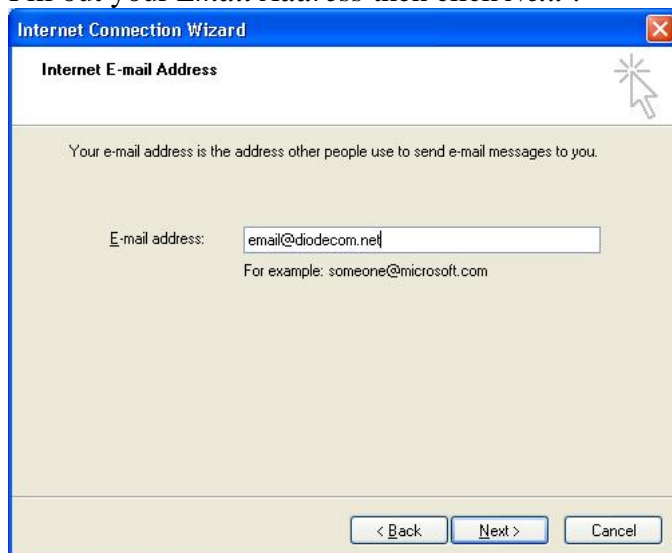
On the *Internet Accounts* window, click on the *Add* button and then choose *Mail*.



Fill out your *Display Name* then click *Next*.

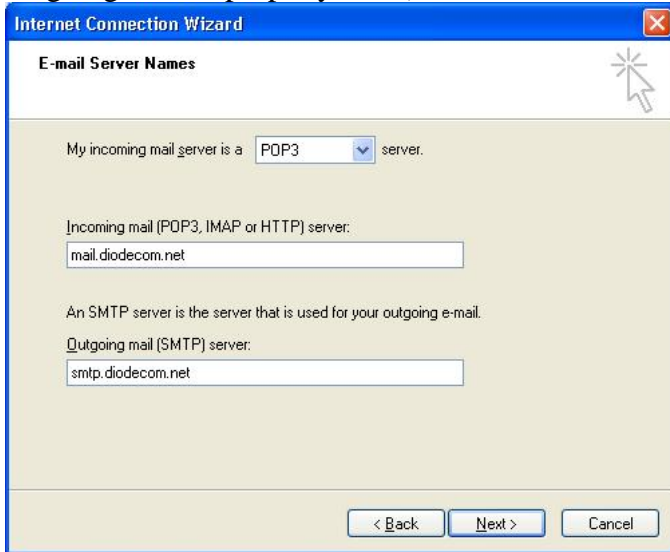


Fill out your *Email Address* then click *Next*.

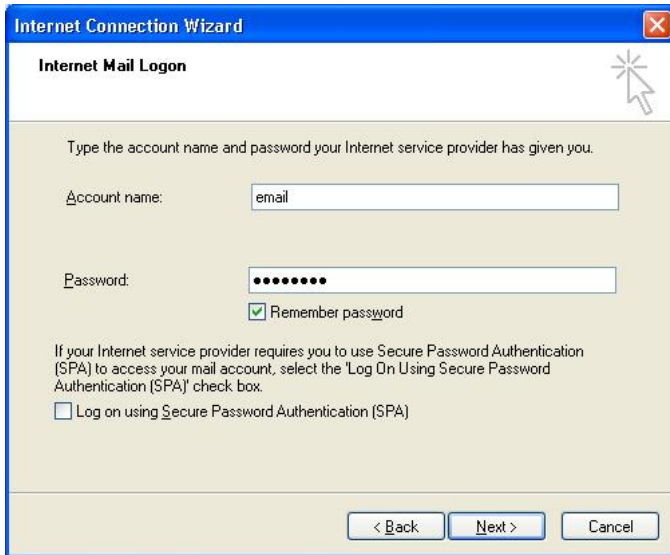


Make sure that at the top, the *Incoming Mail Server* is marked as *POP3*, then in the box below *Incoming Mail Server*, type *mail.diodecom.net* and then in the box below

Outgoing Mail Server, type smtp.diodecom.net then click *Next* (If you have WildBlue for your Internet, please see the end of the article on some additional settings for your outgoing mail to properly work).

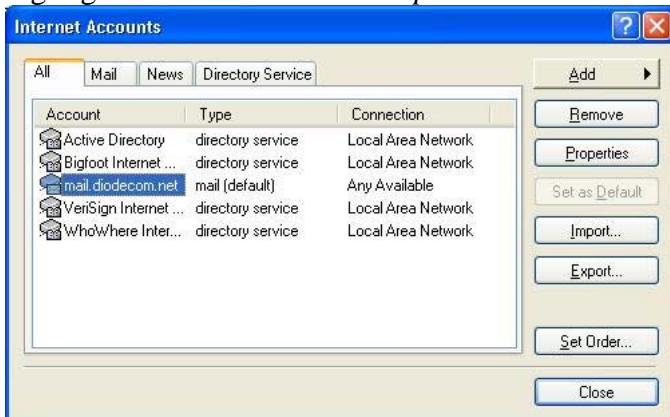


Make sure your *Account Name* is correct, then type in your *Password* and make sure the *Remember Password* box is checked and click *Next*.

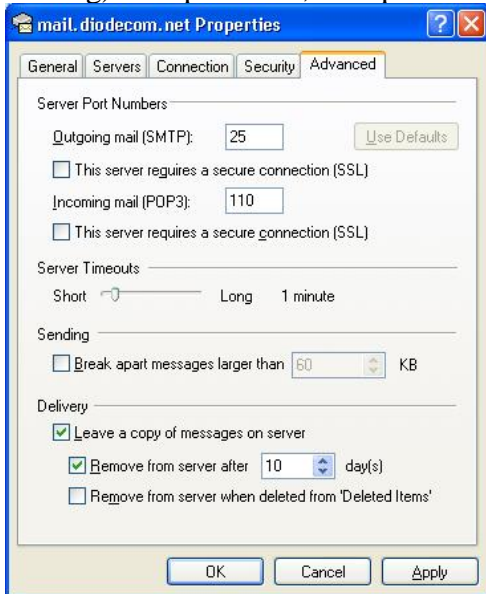


Click on the *Finish* button.

Once back to the *Internet Accounts* window, make sure the mail.diodecom.net Account is highlighted then choose the *Properties* button.



When the *mail.diodecom.net Properties* window opens up click on the *Advanced* tab, then select the boxes for *Leave A Copy Of Messages On Server* and *Remove From Server After 5 Days*. Then go ahead and change the 5 to 10 and then press the *Apply* button, (If you have WildBlue, skip the rest of this and jump to the next step, otherwise continue reading) then press *OK*, then press *Close* to start sending and receiving messages.



For WildBlue Users Only

With the *Properties* window still open, click on the *Servers* tab. Change the *Outgoing Mail* server to *smtp2.diodecom.net* and then click the check box at the bottom of the screen that says *My Server Requires Authentication*, then press the *OK* button and then click the *Close* button to start sending and receiving your messages. *After your WildBlue is installed, you may need to wait up to 5 days for your email to start working properly.

