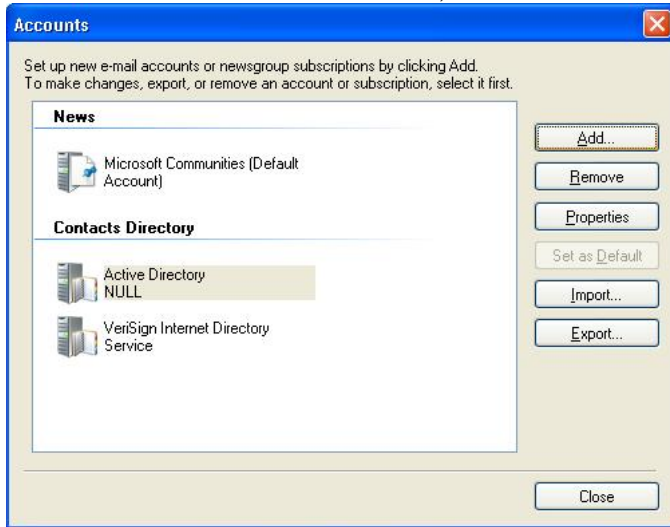


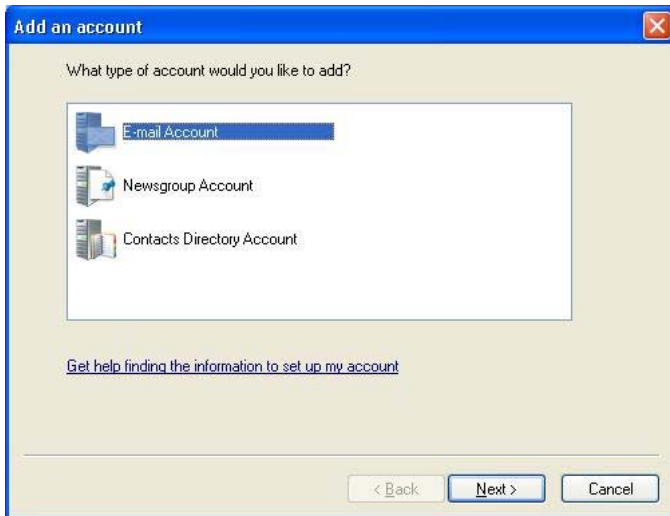
On your *Windows XP* computer, open up *Windows Live Mail*.

On the menu bar across the top of the window, select *Tools* and then click on *Accounts*.

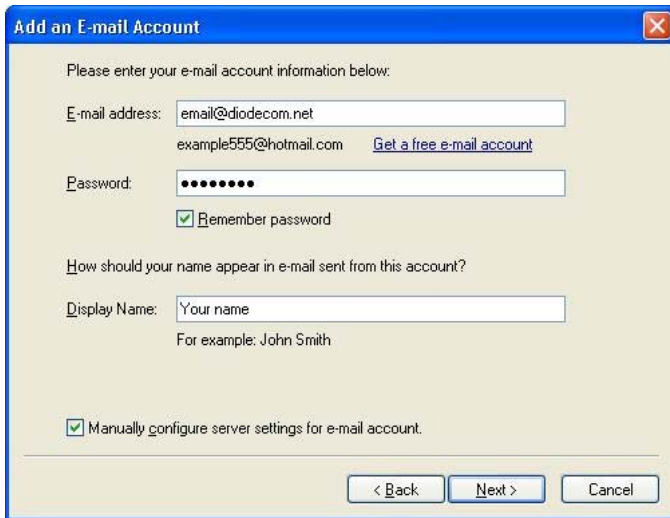
On the *Internet Accounts* window, click on the *Add* button.



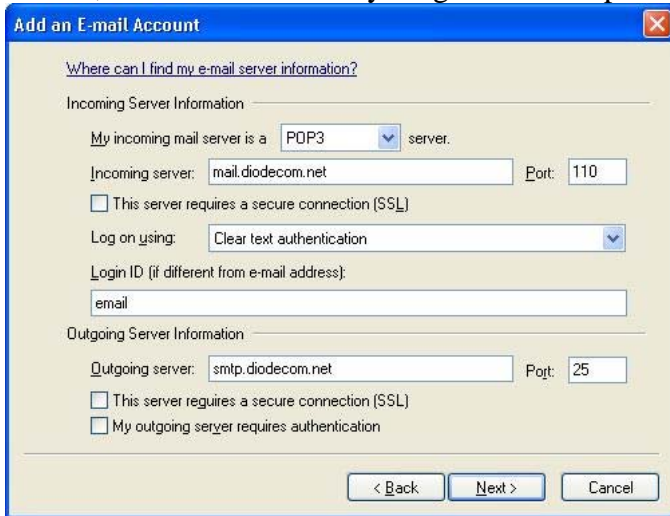
When the *Add An Account* window opens up, make sure *E-mail Account* is highlighted and then click the *Next* button.



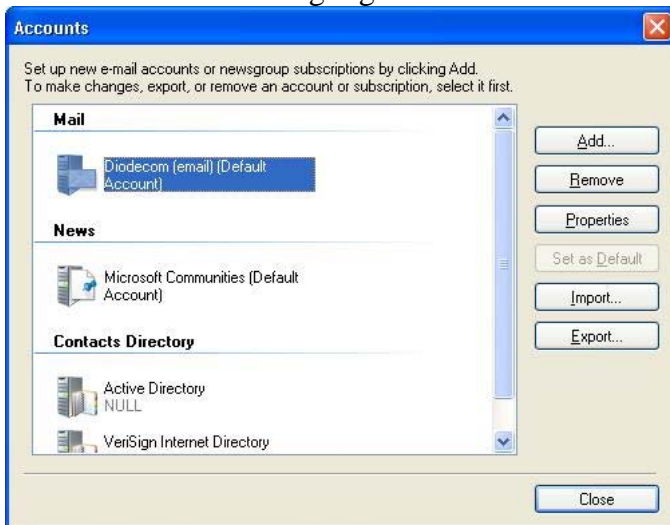
On the next screen, enter your *E-mail Address*, *Password*, and *Display Name*. Make sure that both the *Remember Password* and *Manual Configure Server Settings* boxes are checked, and then click *Next*.



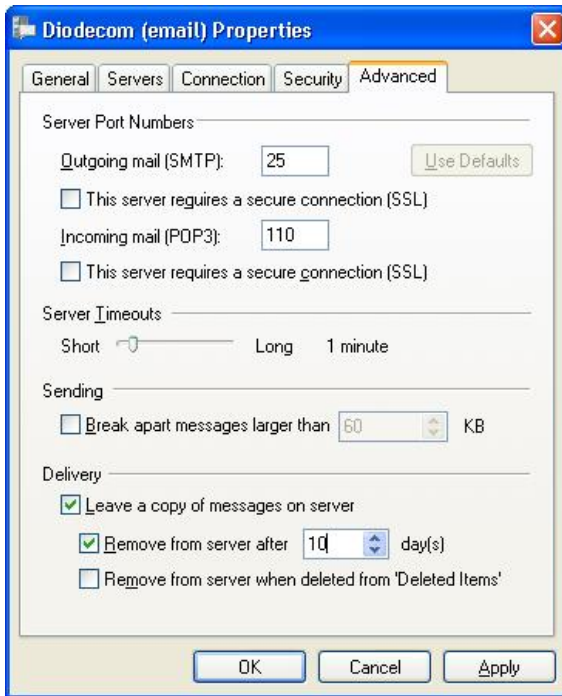
Then make sure the *Incoming Mail Server* is set to a *POP3* server. Then enter mail.diodecom.net for the *Incoming Server* and smtp.diodecom.net for the *Outgoing Server* (If you have WildBlue for your Internet, please see the end of the article on some additional settings for your outgoing mail to properly work). Make sure your username is correct, then make sure everything else is set up like the picture and click *Next*.



Then click the *Finish* button to be taken back to the *Accounts* window. Make sure the Diodecom account is highlighted in the list and click the *Properties* button.



On the *Properties* window, click on the *Advanced* tab and then check both of the boxes for *Leave A Copy Of Messages On Server* and *Remove From Server After 5 Days*. Change the 5 to 10 and then press the *Apply* button, (If you have WildBlue, skip the rest of this and jump to the next step, otherwise continue reading) then press the *OK* button and then click the *Close* button to start sending and receiving your messages.



For WildBlue Users Only

With the *Properties* window still open, click on the *Servers* tab. Change the *Outgoing Mail* server to *smtp2.diodecom.net* and then click the check box at the bottom of the screen that says *My Server Requires Authentication*, then press the *OK* button and then click the *Close* button to start sending and receiving your messages. *After your WildBlue is installed, you may need to wait up to 5 days for your email to start working properly.

